

INSTRUCTION MANUAL

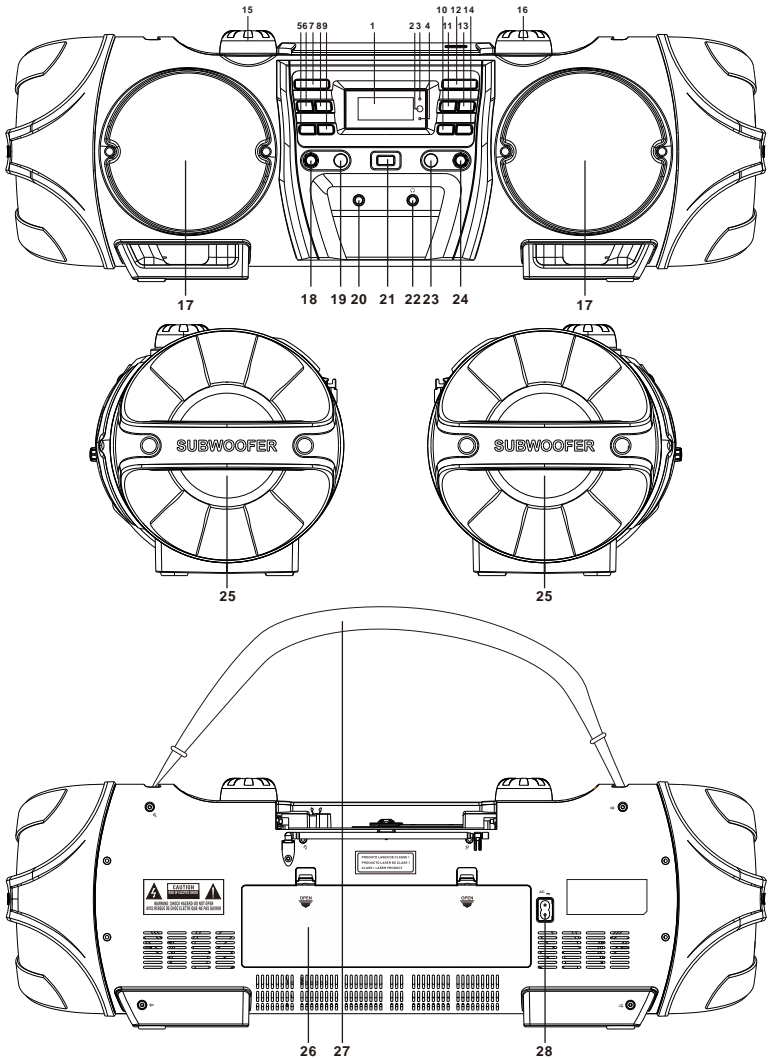
**Portable CD/MP3/USB/BLUETOOTH Player with DAB+
Radio**

MODEL: SCD8000



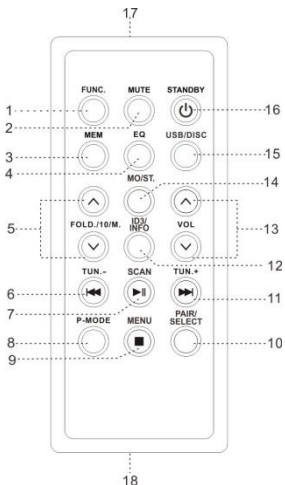
Thank you for purchasing your new SCD8000. We recommend that you spend some time reading this instruction manual in order that you fully understand all the operational features it offers. Read all the safety instructions carefully before use and keep this instruction manual for future reference.

Product Overview



1. DISPLAY
2. REMOTE CONTROL INDICATOR
3. STANDBY INDICATOR
4. PAIR INDICATOR
5. FOLDER/MEM/10 - BUTTON
6. PROG/P-MODE/M. BUTTON
7. POWER/STANDBY BUTTON
8. EQ/ID3/INFO BUTTON
9. FOLDER/MEM/10 + BUTTON
10. STOP/MENU BUTTON
11. PREVIOUS/FAST BACKWARD BUTTON
12. FUNCTION BUTTON
13. NEXT/FAST FORWARD BUTTON
14. PLAY/PAUSE/PAIR/SELECT BUTTON
15. VOLUME KNOB
16. TUNING KNOB
17. LEFT/RIGHT SPEAKERS
18. MIC VOLUME KNOB
19. 6.3 MM MIC INPUT JACK
20. 3.5 MM AUX IN JACK
21. USB PORT
22. 3.5 MM HEADPHONE JACK
23. 6.3 MM GUITAR INPUT JACK
24. GUITAR VOLUME KNOB
25. LEFT/RIGHT SUBWOOFER
26. BATTERY COMPARTMENT DOOR
27. CARRYING STRAP
28. AC POWER CABLE SOCKET

Remote Control

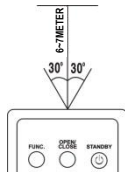


1. FUNCTION BUTTON
2. MUTE BUTTON
3. MEMORY BUTTON
4. EQ BUTTON
5. FOLD./10/M. UP/DOWN BUTTON
6. CD B-SKIP DOWN/TUN.- BUTTON
7. PLAY/PAUSE/SCAN BUTTON
8. P-MODE BUTTON
9. STOP/MENU BUTTON
10. PAIR/SELECT BUTTON
11. CD F-SKIP UP/TUN.+ BUTTON
12. ID3/INFO BUTTON
13. VOLUME UP/DOWN BUTTON
14. MO/ST. BUTTON
15. USB/DISC BUTTON
16. STANDBY BUTTON
17. REMOTE SENSER
18. BATTERY COMPARTMENT

Note: Please pull the battery protector out before using.

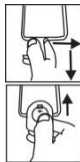
REMOTE CONTROL OPERATION

To operate the unit with the remote control, point the remote control at the remote sensor on the front panel and press the appropriate button on the remote control. The remote control works best within a range of 6 ~ 7 meters from the front panel and at an angle of 30 degrees. Bright sunlight or room light conditions can interfere with the remote control. If the remote operation is unsatisfactory or stops working entirely, first try replacing the remote batteries, then try reducing the room lighting conditions.



LITHIUM BATTERY INSTALLATION OF REMOTE CONTROL

- The remote control includes one CR2025 (3V) lithium battery.
- To replace the battery, gently push the clasp to the right direction accordingly to the instruction and then pull out the battery compartment. Take the drained battery out and install a new lithium battery (CR-2025) in the compartment with the positive polarity upward. Then push the compartment back to its position with a “click” sound indicating the installation is finished.



POWER SOURCE

This unit is designed to be operated on AC/DC power.

AC OPERATION

Plug the AC power cable into the AC socket on unit and then plug into a household AC outlet. The battery power will automatically be disconnected.

DC OPERATION

Open the BATTERY COMPARTMENT DOOR. Install 10pcs UM-1/D size batteries (not included) into the compartment. Please follow the correct polarities as indicated.

CAUTION:

- Remove batteries if they are flat or not being used for a long period of time.
- Batteries contain chemical substances, so they should be disposed of properly.

BASIC FUNCTION

TURNING THE UNIT ON/OFF

Press the **STANDBY** button on the unit or remote control to turn the unit on or off.

NOTE: In CD/MP3/USB/Bluetooth/Aux in mode, when the unit is not providing the main function for 15 minutes, the unit will automatically switch into standby mode. To turn on the unit again, press the **STANDBY** button.

Please note that a low volume setting in the audio source may be recognized as a “no audio signal”, this will affect the capability of signal detection from the device and can also automatically switch the unit into standby mode. If this happens please reactivate the audio signal transmission or increase the volume setting on the audio source player in order to resume playback.

Electrostatic Discharge hints – The unit may reset or may not reset to normal operation mode due to electrostatic discharge, just switch it off and reconnect it again.

SETTING THE FUNCTION MODE

There are 5 function modes; press the **FUNCTION** button on the unit or remote control to change modes. The 5 modes are:

- **FM MODE:** Listen to FM radio broadcasts.
- **DAB MODE:** Listen to digital audio broadcasts.
- **CD MODE:** Play compact discs (CD-audio or CD-MP3).
- **USB MODE:** Play MP3s from USB memory sticks.
- **BLUETOOTH MODE:** Stream audio from wireless players with Bluetooth®.

NOTE: The unit will automatically switch to AUX mode when a 3.5mm AUX cable is connected to the AUX input jack. Disconnect the cable to exit AUX mode, then press **FUNCTION** button to choose other modes. (When the AUX cable is connected, **FUNCTION** button is unavailable.)

ADJUSTING THE VOLUME

1. Rotate the Volume control on the unit or press VOL-/VOL+ keys on the remote control to increase or decrease the volume level.
2. Rotate the M.VOL control knob on the unit to increase or decrease the microphone volume.
3. Rotate the G.VOL control knob on the unit to increase or decrease the microphone volume.

EQ FUNCTION

This unit has a built-in equalizer system, press the **EQ/ID3/INFO** button on the unit or the **EQ** button on the remote control while playing to select a different music style (sound tone): FLAT, JAZZ, ROCK, CLASSIC and POP and 3D.

ID3 System

When playing a MP3 file, press and hold the **EQ/ID3/INFO** button on the unit or press the **ID3/INFO** button on the remote control, it will show "ID3 ON", if the mp3 file is "ID3" format, it will automatically search the information of "TITLE NAME" "ARTIST NAME" and "ALBUM NAME" and show on the display. Press and hold the **EQ/ID3/INFO** button on the unit or press the **ID3/INFO** button on the remote control to go back to normal display.



HEADPHONE JACK

For private listening, insert a 3.5mm headphone (not included) into the HEADPHONE jack. The SPEAKER output will automatically cut off.

CAUTION: LISTENING TO MUSIC AT A HIGH VOLUME OVER A LONG PERIOD OF TIME IS NOT GOOD FOR YOUR EARS.

FM TUNING MODE (Radio)

To listen to FM radio broadcasts, press the **FUNCTION** button until the display reads FM MODE.

To optimize the reception when listening to stations on the FM band, extend the telescopic antenna to its full length.

TUNING TO A RADIO STATION

If you know the station frequency that you want to tune to directly:

- Tune to a station by turning the **TUNING** dial on the unit or pressing the **◀◀/TUN.-** or **▶▶/TUN.+** button on the remote control. The station frequency is shown on the display.

To tune to a preset station:

- To tune to the next preset station, press the **FOLDER/MEM./10 +** button on the unit or remote control.
- To tune to the previous preset, press the **FOLDER/MEM./10 –** button on the unit or remote control.

AUTO PRESET MEMORY/SCAN

To scan for stations within reception range and save them automatically to preset memory, press and hold the **PLAY/PAUSE/PAIR/SELECT** button on the unit or the **PLAY/PAUSE/SCAN** button on the remote control. After the unit has finished scanning, the unit will automatically tune to preset number 1.

MANUAL PRESET MEMORY OPERATION

You may pre-store 30 radio stations in the memory.

1. Rotate the tuning dial on the unit or press the **◀◀/TUN.-** or **▶▶/TUN.+** button on the remote control to select the desired station that you want to save as a preset.
2. Press and hold the **PROG./P-MODE/M.** button on the unit or the **MEMORY** button on the remote control until the display shows "Preset Store". Use the **◀◀** or **▶▶** button to choose a preset memory position (for example, "Preset 1"), then press the **PLAY/PAUSE/PAIR/SELECT** button on the unit or the **PLAY/PAUSE/SCAN** button on the remote control to confirm. Repeat this operation to save up to 30 preset stations.
3. Press the **FOLDER/MEM./10 +/-** buttons on the unit or the **FOLD./10/M. UP/DOWN** buttons on the remote control to switch between the stored stations.

DAB RADIO MODE

DAB radio mode receives DAB/DAB+ digital radio and displays information about the station and programmed/track as broadcast. Press the **FUNCTION** button until display reads "Welcome to DAB".

Scanning for stations

1. To do a full scan, press the **STOP/MENU** button to enter menu selection, select the "Full scan" option and press the **PLAY/PAUSE/PAIR/SELECT** button on the unit or **PLAY/PAUSE/SCAN** button on the remote control to confirm. Once a full scan is complete, the radio returns to play the previously-selected station or first station on the station list.
2. To choose between the scanned station list, press the **◀◀** or **▶▶** button to scroll through the list of stations and press the **PLAY/PAUSE/PAIR/SELECT** button to confirm. The Now playing screen will display the new station details.
3. To remove stations that are listed but unavailable, press the **STOP/MENU** button to enter menu selection, select the "Prune" option and press the **PLAY/PAUSE/PAIR/SELECT** button to enter, press the **◀◀** or **▶▶** button to choose YES or NO option, then press the **PLAY/PAUSE/PAIR/SELECT** button to confirm. This removes all invalid stations, indicated in

the station list with a “?” in front of the station name.

Preset stations

To store a station in a preset memory, tune to the station that you want to save as a preset, then press and hold the **PROG./P-MODE/M.** button on the unit or the **MEMORY** button on the remote control until the display shows “Preset Store”. Use the **◀** or **▶** button to choose a preset memory position (for example, “Preset 1”), then press the **PLAY/PAUSE/PAIR/SELECT** button to confirm. Repeat this operation to save up to 30 preset stations.

Manual tune

To do a manual tune, press the **STOP/MENU** button to enter menu selection, select the “Manual tune” option and press the **PLAY/PAUSE/PAIR/SELECT** button to confirm. Use the **◀** or **▶** button to tune to the desired stations.

Now playing information

While a station is playing, the screen shows its name and DLS (Dynamic Label Segment) information broadcast by the station such as program name, track title and contact details. To view further information, press and hold the **EQ/ID3/INFO** button each time to show next set of information, cycling through: DLS text, DL Plus information (this is only displayed if broadcast by the station), signal strength, program type, ensemble name, channel number/frequency, signal error rate and bit rate.

Dynamic range compression (DRC)

This function helps to reduce the difference between the loudest and quietest audio being broadcast. Effectively, this makes quite sounds comparatively louder and loud sounds comparatively quieter. There are 3 options in this setting, the options available are: DRC high/low/off. To change the DRC setting, press the **STOP/MENU** button to enter menu selection, select the “DRC” option then use the **◀** or **▶** button to choose a desired option and press the **PLAY/PAUSE/PAIR/SELECT** button to confirm.

System

The system setting allows you to select display languages, reset to factory settings and view the software version.

Language

To select different languages for display messages, press the **STOP/MENU** button to enter menu selection, select the “System” option and press the **PLAY/PAUSE/PAIR/SELECT** button to enter, select “Language” then press the **◀** or **▶** button to choose the desired language to be displayed, then press the **PLAY/PAUSE/PAIR/SELECT** button to confirm.

Factory reset

Factory reset can help to clear all user defined settings, replacing them with the original default values, including the DAB station list and preset stations. Press the **STOP/MENU** button to enter menu selection, select the “System” option and press the **PLAY/PAUSE/PAIR/SELECT** button to enter, select “Factory reset” then press the **◀** or **▶** button to choose YES or NO option, then press the **PLAY/PAUSE/PARI/SELECT** button to confirm.

Software version

This displays the current software version. Press the **STOP/MENU** button to enter menu selection, select the "System" option and press the **PLAY/PAUSE/PAIR/SELECT** button to enter, select "SW version" then press the **PLAY/PAUSE/PAIR/SELECT** button to view the current software version.

CD MODE (CD and MP3 Discs)

Play CDs with audio or MP3 files. Press the **FUNCTION** button to select "CD MODE".

SUPPORTED DISC FORMATS

This unit can play all digital audio CD/MP3, finalized digital audio CD-Recordable (CD-R) discs and finalized digital audio CD-Rewritable (CD-RW) discs.

LOADING A DISC

1. To open the CD door, press **PUSH TO OPEN** on the CD door; the display will read "OPEN".
2. Place the compact disc into the tray with the label side facing up.
3. Close the CD door; the display will flash "READING". Playback will start automatically after CD reading has finished.
4. To remove the CD, press the **STOP** button to stop playback. *Wait for the CD to stop spinning completely!* To open the CD door, press **PUSH TO OPEN** on the CD door. Remove the CD carefully taking care to handle it by its sides.

Notes:

- Make sure the disc has completely stopped before opening the CD door.
- To ensure good system performance, wait until the unit has complete read the disc before proceeding.
- If no disc is loaded into the tray, or the disc is unreadable, the display will show "NO DISC".

PLAYING A DISC

Playback starts automatically from Track 1 after a compact disc has been loaded and read by the boom box.

- To pause playback, press the **PLAY/PAUSE/PAIR/SELECT** button. The current track time will flash on the display.
- To resume playback, press the **PLAY/PAUSE/PAIR/SELECT** button again.
- To stop playback, press the **STOP/MENU** button.

To skip tracks

Press the **⏮** or **⏭** button to skip to the next or previous track respectively. Track numbers are shown on the display.

To scan quickly to a point in a track

Press and hold the **⏮** or **⏭** button to quickly scan forwards or in reverse through a track. The track time is shown on the display.

To skip tracks quickly (for MP3 discs, only)

To skip 10 tracks at a time, press the **FOLDER/MEM/10+** button to skip forward 10 tracks. Press the **FOLDER/MEM/10-** button to skip backward 10 tracks.

To select a desired folder (for MP3 discs, only)

To select a track in a folder, press and hold the **FOLDER/MEM/10+** button each time to skip forward a folder. Press and hold the **FOLDER/MEM/10-** button each time to skip backward a folder.

PROGRAMING TRACKS

You can create a custom play list from your disc when playback is stopped. You can program up to 20 tracks for a CD disc and 99 tracks for an MP3 disc.

1. While play is stopped, press the **PROG/P-MODE/M.** button on the unit or **MEMORY** button on the remote control. The display will show **MEMORY** and “P01” will flash.
2. Use the **◀◀** / **▶▶** buttons to select the first track to be saved to the program list, then press the **PROG/P-MODE/M.** button on the unit or the **MEMORY** button on the remote control to save. The display will now show the next program number (e.g., “P02”).
3. Repeat step 2 to save more tracks to the program list until all tracks have been programmed.
4. Press the **PLAY/PAUSE/PAIR/SELECT** button to start playing the program list from the beginning. The display will show which track is currently playing.
5. Press the **STOP/MENU** button on the unit to stop program playback. Press the **STOP/MENU** button one more time to clear the program.

REPEAT/RANDOM/INTRO PLAY MODE (P-MODE)

To change the playback mode, press the **PROG/P-MODE/M.** button on the unit or the **P-MODE** button on the remote control during playback; the display will show the current P-MODE. Modes include repeat, random, and intro.

- REP-1: Repeat the current track.
- REP- ALL: Repeat all tracks.
- REP-ALBUM: Repeat all of the tracks in the current directory/folder (MP3 playback only).
- RANDOM: Play tracks in random order.
- INTRO: Play the first 10 seconds of each track.

To return to normal playback, press the **PROG/P-MODE/M.** button on the unit or the **P-MODE** button on the remote control until there are no P-MODE indicators on the display. P-MODE is also canceled when you stop playback.

Note: Unplug the unit, reconnect it again, playback will start from the last playing track.

USB MODE

Play MP3 files from USB memory sticks. Press the **FUNCTION** button to select “USB MODE”.

PLAYING MP3s FROM USB MEMORY

1. Connect the USB memory stick to the USB port found on the front of the unit. The display will show the total number of playable tracks on the USB device. Playback will start automatically from Track 1.
 2. To pause playback, press the **PLAY/PAUSE/PAIR/SELECT** button. The current track time will flash on the display. To resume playback, press the **PLAY/PAUSE/PAIR/SELECT** button again.
 3. To stop playback, press the **STOP/MENU** button.
- Repeat play (repeat 1- repeat album - repeat all)/program play/random play/intro play operation is the same as described in "CD MODE" programming.

NOTICE:

- ▶ *To prevent harmful interference, always connect USB devices directly to the unit. Do not use a USB extension cable to connect USB devices to the unit.*
- Unplug the unit, reconnect it again, playback will start from the last playing track.*

AUX IN OPERATION

1. The unit will automatically switch to AUX mode when a 3.5mm AUX cable is connected to the AUX input jack.
2. Insert the AUX line plug into the AUX IN jack (Φ3.5mm) on the player, music from the device will be amplified and exported from the speakers.
3. Adjust the volume of the main unit to your desired level.
4. Press PLAY on the external audio source (e.g. MP3 player) to start playback.
5. Disconnect the cable to exit AUX mode.

MIC JACK OPERATION

Microphone input is available in all modes.

1. Connect your microphone to the 6.3mm MIC jack found on the front of the unit.
2. Rotate the M.VOL control knob on the unit to increase or decrease the microphone volume.

GUITAR JACK OPERATION

Guitar input is available in all modes.

1. Connect your guitar to the 6.3mm Guitar jack found on the front of the unit.
2. Rotate the G.VOL control knob on the unit to increase or decrease the microphone volume.

BLUETOOTH OPERATION

1. Press the **FUNCTION** button to select "BT MODE", the pair indicator light will flash.
2. Turn on the Bluetooth function on the device, scan the unit "SCD8000" and connect, then input the password 0000 if required, the light will light up to indicate that the connection is done, and the display will show "CONNECT". Press Play to start playback. If the unit can't connect to the relative Bluetooth device within 2 minutes, the indicator light will flash every 2 seconds. Then press the **PLAY/PAUSE/PAIR/SELECT** button on the unit or the **PAIR/SELECT** button on the remote control to reconnect.

3. Rotate the Volume control or press the VOL- / VOL+ buttons on the remote control to increase or decrease the volume to your desired level.
4. Press the **PLAY/PAUSE/PAIR/SELECT** button on the unit or the **PAIR/SELECT** button on the remote control to disconnect Bluetooth.

Note: Bluetooth works best within 10 meters.

SPECIFICATIONS

GENERAL

Power Requirement AC 100-240V~60/50Hz

DC 15V UM-1 (D-Size) x 10pcs

Power consumption 70 Watts

Dimensions 219(D) x 660(W) x 224 (H) mm

Operation temperature + 5°C ~ + 35°C

RECEIVER SECTION

Receiving Bands FM

Frequency Range FM 87.5 – 108 MHz

COMPACT DISC SECTION

Optical Pickup 3-Beam Laser

Frequency Response 100Hz – 16KHz

AUDIO SECTION

Power output Total 60W

ACCESSORIES

Instruction Manual

Remote Control

AC Cable

Technical changings without any notice

Copyright by Wörlein GmbH, D 90556 Cadolzburg - Germany